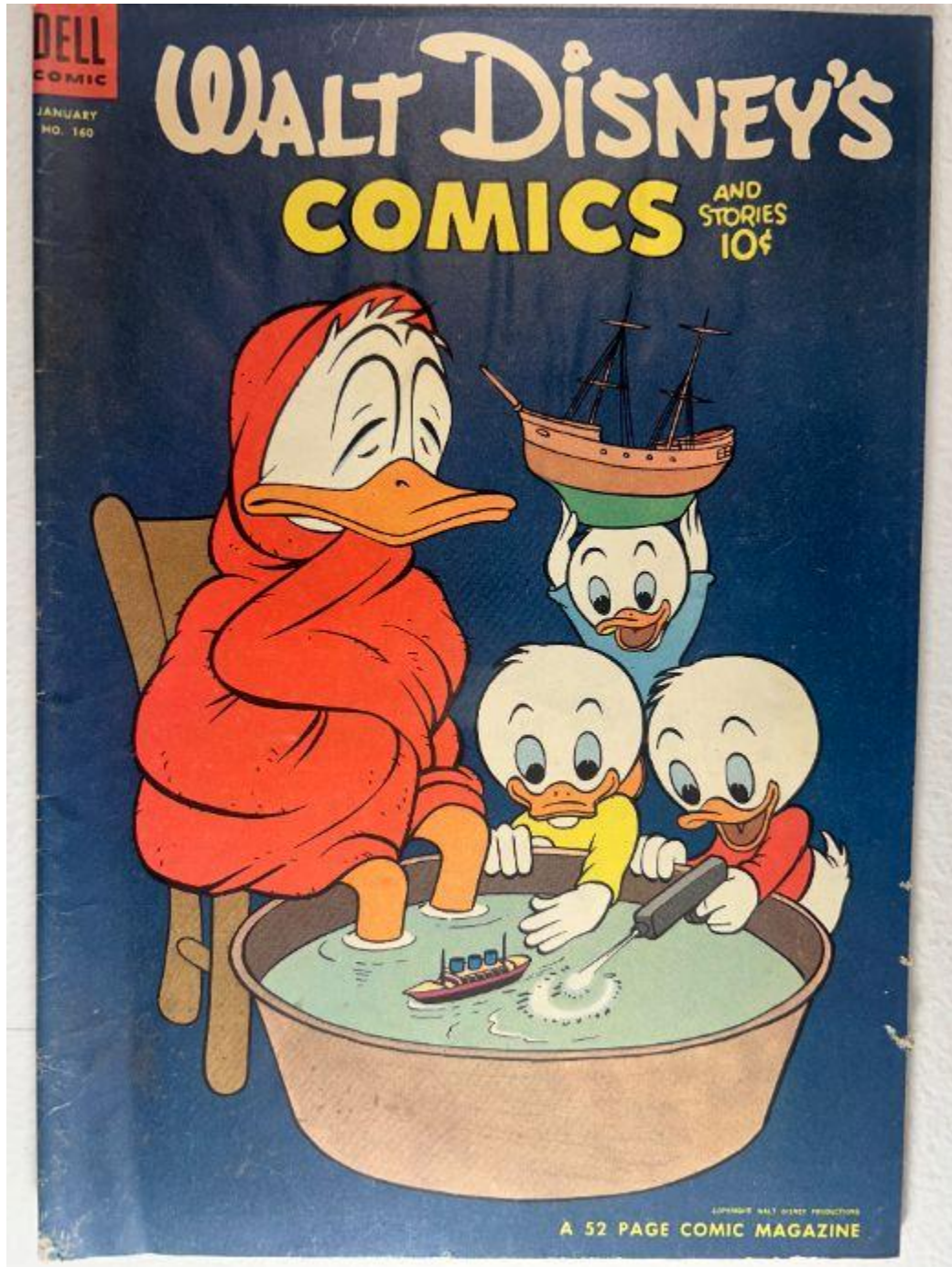


■ **Walt Disney's Comics and Stories – Vol. 14 No.4
(January 1952)**

Evaluation Date: April 3, 2026



SUMMARY OF OBSERVATIONS

This comic retains the front cover, back cover, centerfold, and all photographed interior pages. Overall presentation is solid, with the front cover showing good remaining color and moderate surface gloss. Interior pages are complete and readable with consistent age-related toning. The spine remains continuous, showing a **slight roll** and wear concentrated at the staple areas.

Condition issues are present but localized. The front cover exhibits **edge chipping and shallow paper loss along the outer (fore) edge**, as well as **surface waviness**. Both staples are present and embedded, showing **heavy oxidation with surrounding paper discoloration**. One interior page shows **small chips along the fore edge**, while the remaining pages show uniform toning without isolated staining. The back cover exhibits **surface waviness** without defined moisture staining. The brittleness test image shows a single page gently flexed with no visible fiber fracture.

FRONT COVER — OBSERVATIONS

Walt Disney's Comics and Stories – Vol. 14 No. 4 (January 1952)

Photo Condition & Quality:

Image is sharp and evenly lit, with the full cover, edges, corners, and spine visible. Resolution is sufficient to assess edge integrity, gloss, and surface texture.

Observations:

- Color saturation remains strong across the dark blue background and character artwork.
- Surface gloss is present but uneven due to wear.
- Along the **outer (right) edge**, there is **edge chipping and shallow paper loss**, visible as small, irregular notches exposing lighter paper beneath the ink layer.
- Individual chips measure approximately **2–5 mm** inward from the edge at several points.
- The cover surface shows **waviness**, visible as gentle undulation rather than sharp creasing.
- Along the spine edge, **fine vertical cracking** is present, approximately **2–4 mm** in length.
- Corners show moderate rounding, approximately **4–7 mm** inward.
- No writing observed on the front cover.

Overall Impression:

The front cover retains good visual appeal but shows **edge chipping, surface waviness, and spine wear**.

BACK COVER — OBSERVATIONS

Walt Disney's Comics and Stories – Vol. 14 No. 4 (January 1952)

Photo Condition & Quality:

Image is clear and evenly lit, fully framed with edges and corners visible.

"SPARK UP!
fake out that
pass defender!"
said **TOM FEARS**
STAR END, LOS ANGELES RAMS

"I FOUND AN
END HAD TO
SHAKE OFF DEFEND-
ERS TO CATCH PASSES,
TOM FEARS SHOWED
ME HOW."

SEE—I DIDN'T FAKE UNTIL THE
LAST MOMENT, THEN I
CUT AND WENT BY
YOU, AND TO KEEP
SPARKIN'...

KEEP IN SHAPE. THAT MEANS
LOTS OF REST, PRACTICE AND
GOOD FOOD. FOR BREAKFAST I
RECOMMEND WHEATIES—
REAL ENERGY FOOD!

BET WHEATIES
WILL SPARK
ME, TOO!

NICE FAKING—
YOU'RE SPARKIN'
NOW!

GOT IT! THAT
WHEATIES SPARK
SURE HELPS!

There's a whole kernel of Wheat in
every Wheaties flake!

- ✓ WHOLE WHEAT FOR GROWTH
- ✓ WHOLE WHEAT FOR ENERGY
- ✓ WHOLE WHEAT FOR STAMINA

**SPARK UP
WITH
WHEATIES!**

"Sparkin'" and "Sparkin'"
and "Sparkin'" are registered
trademarks of the Wheaties Food
Company, Inc.

Get this photo out. Look for different champion pictures in other Dell Comics.

Observations:

- Back cover exhibits **uniform tan toning** consistent with age.
- The surface shows **waviness**, visible as shallow rippling across the page.
- No tide lines, dark boundary stains, or localized moisture marks observed.
- Edge wear along the bottom and spine edges affects approximately **5–10 mm intermittently**.
- Corners show rounding of approximately **4–6 mm** inward.
- No writing observed.

Overall Impression:

The back cover remains intact with **surface waviness and moderate handling wear**, without staining.

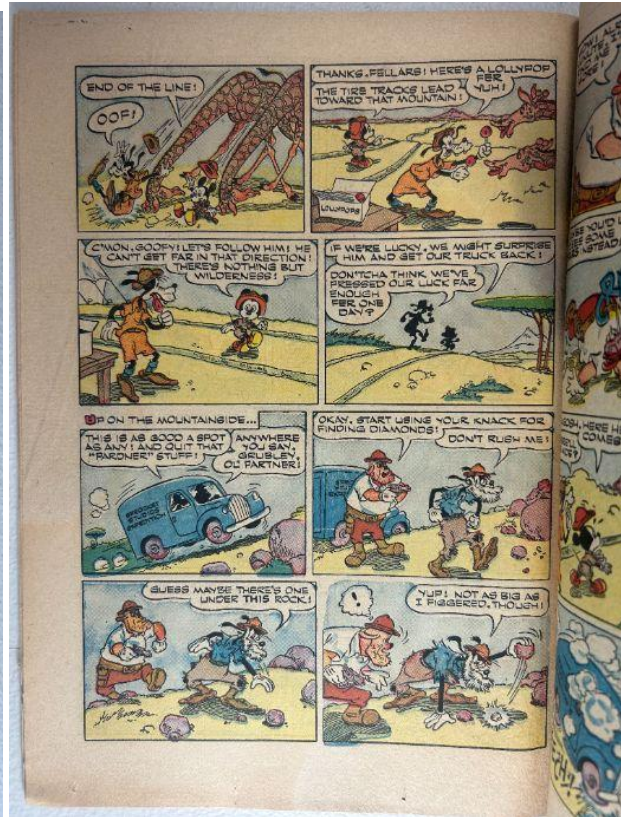
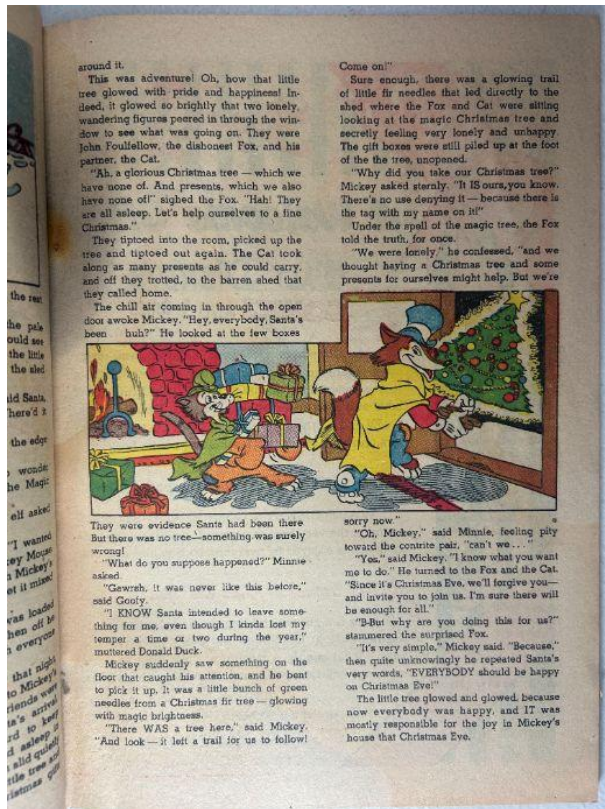
INTERIOR PAGES — OBSERVATIONS

Walt Disney's Comics and Stories – Vol. 14 No. 4 (January 1952)

Photo Condition & Quality:

Images are sharp and evenly lit, showing full interior pages with margins visible.





Observations:

- Interior pages exhibit **tan to light-tan paper coloration**.
- Toning is consistent across pages, with gradual deepening toward outer margins.
- One interior page shows **small fore-edge chips**, measuring approximately **2–4 mm**, with irregular edges; no tearing extends into panels.
- Remaining pages show no chips or tears.
- Artwork remains clear with strong color and intact panel borders.
- Minor corner bends visible on some pages, approximately **2–4 mm** inward.
- No interior writing observed.
- **Indicia confirmation:** *Walt Disney's Comics and Stories, Vol. 14, No. 4, January 1952.*

Overall Impression:

Interior pages are **complete and readable**, with **localized edge chipping on one page** and otherwise uniform age toning.

CENTERFOLD — OBSERVATIONS

Walt Disney's Comics and Stories – Vol. 14 No. 4 (January 1952)

Photo Condition & Quality:

Image is in focus and evenly lit, clearly showing both pages and the central gutter.

Come Gift!

WALT DISNEY'S COMICS AND STORIES

As give your children and every on your gift list a subscription to magazine. Every year millions of meet Mickey Mouse, Donald Duck, other famous Walt Disney character of this fascinating comic book.

Best in Comic Entertainment

WALT DISNEY'S COMICS AND STORIES is the best in art work, coloring and ready to be enjoyed by everyone both young and old.

Fun the Year Round

A gift which brings lasting pleasure, come at Christmas, but every month of the year. It takes only a minute of your time to order and you have hours of shopping time later.

Used by Parents and Educators Everywhere

FREE!

WALT DISNEY'S **Donald Duck** FULL SPEED AHEAD

With each Christmas subscription to Walt Disney's Comics and Stories, this beautiful 28 page Donald Duck book illustrated in full color.

SIZE 5 1/2" x 6 1/4"

In addition a colorful gift card will be sent to each subscriber with your name shown as donor.

A 1-Year Subscription--\$1.00 (12 Big Issues)
 A 2-Year Subscription--\$1.75 (24 Big Issues)
 A 3-Year Subscription--\$2.50 (36 Big Issues)
 A 5-Year Subscription--\$4.00 (60 Big Issues)

THIS OFFER EXPIRES JANUARY 15, 1954

K. K. PUBLICATIONS, Inc. Dept. 1 POUGHKEEPSIE, N. Y.

Enclosed find money order for \$ _____ covering _____ subscription
 Christmas Offer. (Please print name and address plainly.)
 Send a _____ year subscription to "Walt Disney's Comics and Stories" to: _____
 Name _____
 Street _____
 City _____ State _____
 Zone _____
 Check here if this is a new subscription
 Gift Card to read from _____
 Donor's Name _____
 Address _____
 K. K. PUBLICATIONS, Inc.
 POUGHKEEPSIE, N. Y.

Use plain sheet of paper for additional subscriptions, incorporating the

Observations:

- Both staple positions visible.
- Surrounding paper shows **stress and discoloration** at the staple locations.
- No full detachment observed.
- Fold line shows compression and wear.

Overall Impression:

The centerfold remains **attached but stressed at the binding points**.

SPINE — OBSERVATIONS

Walt Disney's Comics and Stories – Vol. 14 No. 4 (January 1952)

Photo Condition & Quality:

Image is sharp and well lit, showing the full spine length.



Observations:

- Spine remains continuous.
- A **slight spine roll** is visible.
- Fine vertical cracking present, approximately **2–4 mm** per crack.
- Wear and discoloration are concentrated at the staple zones.

Overall Impression:

The spine is **structurally intact but worn**, with a mild roll and cracking.

UPPER STAPLE — OBSERVATIONS

Walt Disney's Comics and Stories – Vol. 14 No. 4 (January 1952)

Photo Condition & Quality:

Macro image is sharp and evenly lit.



Observations:

- Metal staple present and embedded.
- **Heavy oxidation** visible, with rust accumulation on the metal.
- Surrounding paper shows darkened discoloration extending approximately **3–5 mm**.

Overall Impression:

Upper staple shows **heavy oxidation with surrounding paper discoloration**.

LOWER STAPLE — OBSERVATIONS

Walt Disney's Comics and Stories – Vol. 14 No. 4 (January 1952)

Photo Condition & Quality:

Macro image is clear and properly framed.



Observations:

- Metal staple present with oxidation comparable to the upper staple.
- Surrounding paper shows similar discoloration and minor fiber disturbance, approximately 3–5 mm outward.

Overall Impression:

Lower staple shows **heavy oxidation with surrounding paper discoloration.**

BRITTLENESS TEST — OBSERVATIONS

Walt Disney's Comics and Stories – Vol. 14 No. 4 (January 1952)

Photo Condition & Quality:

Image shows a single interior page lifted above flat underlying pages.



Observations (confined to the lifted page):

- Page bends in a **smooth, shallow arc**.
- No visible fiber fracture, splitting, or flaking along the bend line.
- Paper surface remains continuous at the point of flex.

Overall Impression:

The tested page demonstrates **retained flexibility** and does **not exhibit brittle behavior**.